

# JCOOK

PRODUCT CATALOG

2026 VERSION



## VERVE SERIES

[www.mfk.co.id](http://www.mfk.co.id)

FOOD SERVICE EQUIPMENT & SUPPLIES



# Trusted by professional kitchens across the region.

## NOVA Catalog

Power that never backs down. Performance you can rely on. JCOOK gas equipment is built for kitchens that operate at full intensity where speed, consistency, and durability are non-negotiable.

Engineered to deliver strong, responsive heat, our solutions give chefs the control they need to execute every dish with precision. From peak service hours to continuous operations, JCOOK stands as a trusted partner behind every flame.

Because when the pressure is on, your kitchen deserves equipment that performs every single time.

Beginning in 2004, our main focus is to provide high quality Stainless Steel products for General Market ( Kitchen, Hospitality, Pharmacy and many more )

As the increasing demand of commercial food service industry, PT Arindo Cipta Perkasa was founded to match it's demands in 2011. Focusing our products as solutions in enhancing and increasing productivity within the kitchen.

We produce not only Commercial-used Furnitures but also Gas Stoves & Induction Stoves.

---

# About Us

---

## VISION

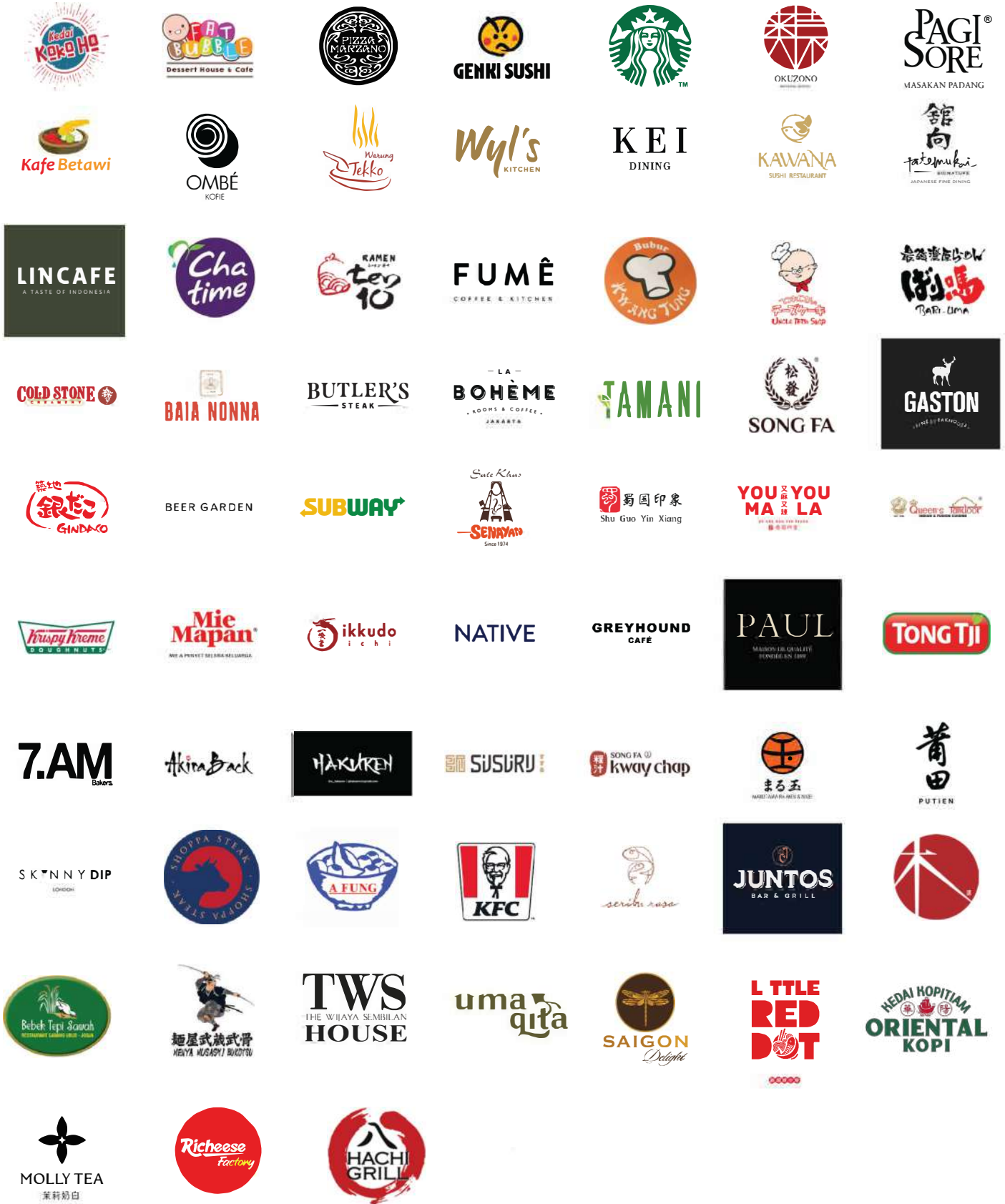
We aim to be advanced & excellence in providing high quality commercial food service equipment by always developing sustainable, cost-efficient, and align with customer needs with international standards.

## MISSION

Produce & supply commercial kitchen equipment with the utmost quality, competitive price through professional assembly for customer's satisfaction.

# Our Partners

## Restaurants



# Our Partners

## Hotels



## Industry



## School



# GAS STOVE RANGE PORTABLE **GS2B-P** 2 BURNER 400

**DIMENSION**  
400 (W) X 750 (D)  
X 335/460 mm (H)

**GAS CONNECTION**  
1/2 Inch

**GAS CONSUMPTION** 15  
Kw / Hr  
(52.000 BTU)

**POWER**  
GAS

**COOKING ZONE**  
2 x 300 x 300

**NET WEIGHT**  
39 Kg



**GS4B-P**  
GAS STOVE RANGE  
PORTABLE  
4 BURNER 700

**GAS CONSUMPTION**  
30 Kw / Hr  
(105.000 BTU)

**DIMENSION**  
700 (W) X 750 (D)  
X 335/460 mm (H)

**GAS CONNECTION**  
1/2 Inch

**NETWEIGHT**  
48 Kg

**POWER**  
GAS

**COOKING ZONE**  
4 x 300 x 300



**GS6B-P**  
GAS STOVE RANGE  
PORTABLE  
6 BURNER 1050

**GAS CONSUMPTION**  
45 Kw / Hr  
(155.000 BTU)

**DIMENSION**  
1050 (W) X 750 (D)  
X 335/460 mm (H)

**GAS CONNECTION**  
3/4 Inch

**NETWEIGHT**  
59 Kg

**POWER**  
GAS

**COOKING ZONE**  
6 x 300 x 300

# GAS STOVE CABINET **GS2B-C** 2 BURNER 400

DIMENSION  
400 (W) X 750 (D)  
X 850/1000 mm (H)

GAS CONNECTION  
1/2 Inch

GAS CONSUMPTION  
15 Kw / Hr  
(52.000 BTU)

POWER  
GAS

COOKING ZONE  
2 x 300 x 300

NET WEIGHT  
54 Kg



GS4B-C  
GAS STOVE  
CABINET  
4 BURNER 700

GAS  
CONSUMPTION  
30 Kw / Hr  
(105.000 BTU)

DIMENSION  
700 (W) X 750 (D)  
X 850/1000 mm (H)

GAS  
CONNECTION  
1/2 Inch

NET WEIGHT  
65 Kg

POWER  
GAS

COOKING ZONE  
4 x 300 x 300



GS6B-C  
GAS STOVE  
CABINET  
6 BURNER 1050

GAS  
CONSUMPTION  
45 Kw / Hr  
(155.000 BTU)

DIMENSION  
1050 (W) X 750 (D)  
X 850/1000 mm (H)

GAS  
CONNECTION  
3/4 Inch

NET WEIGHT  
81 Kg

POWER  
GAS

COOKING ZONE  
6 x 300 x 300

# GAS STOVE OVEN

## 4 BURNER 700 **GS4B-OV**

DIMENSION  
700 (W) X 750 (D)  
X 850/1000 mm (H)

NET WEIGHT  
136 Kg

GAS CONNECTION  
3/4 Inch

COOKING ZONE  
4 x 300 x 300

GAS CONSUMPTION  
37.9 Kw / Hr  
(130.000 BTU)

OVEN SIZE  
560 x 600 x 290 mm

POWER  
GAS



# GAS STOVE OVEN

## 6 BURNER 1050 **GS6B-OV**

DIMENSION  
1050 (W) X 750 (D)  
X 850/1000 mm (H)

NET WEIGHT  
173.5 Kg

GAS CONNECTION  
3/4 Inch

COOKING ZONE  
6 x 300 x 300

GAS CONSUMPTION  
52.9 Kw / Hr  
(190.000 BTU)

OVEN SIZE  
560 x 600 x 290 mm

POWER  
GAS



# GAS FLAT GRIDDLE PORTABLE 400

DIMENSION  
400 (W) X 750 (D)  
X 335/460 mm (H)

GAS CONNECTION  
1/2 Inch

GAS CONSUMPTION  
5 Kw / Hr  
(18.000 BTU)

POWER  
GAS

DRAIN  
1 1/4 Inch

NET WEIGHT  
32 Kg



GF60-P  
GAS FLAT GRIDDLE  
PORTABLE  
600

GAS  
CONSUMPTION  
6.2 Kw / Hr  
(22.000 BTU)

DIMENSION  
600 (W) X 750 (D)  
X 335/460 mm (H)

GAS  
CONNECTION  
1/2 Inch

NET WEIGHT  
40 Kg

POWER  
GAS

DRAIN  
1 1/4 Inch



GF90-P  
GAS FLAT GRIDDLE  
PORTABLE  
900

GAS  
CONSUMPTION  
10 Kw / Hr  
(35.000 BTU)

DIMENSION  
900 (W) X 750 (D)  
X 335/460 mm (H)

GAS  
CONNECTION  
1/2 Inch

NET WEIGHT  
55 Kg

POWER  
GAS

DRAIN  
1 1/4 Inch

# GAS FLAT GRIDDLE CABINET 400

DIMENSION  
400 (W) X 750 (D)  
X 850/1000 mm (H)

GAS CONNECTION  
1/2 Inch

GAS CONSUMPTION  
5 Kw / Hr  
(18.000 BTU)

POWER  
GAS

DRAIN  
1 1/4 Inch

NET WEIGHT  
43 Kg



GF60-C  
GAS FLAT GRIDDLE  
CABINET  
600

GAS  
CONSUMPTION  
6.2 Kw / Hr  
(22.000 BTU)

DIMENSION  
600 (W) X 750 (D)  
X 850/1000 mm (H)

GAS  
CONNECTION  
1/2 Inch

NET WEIGHT  
53 Kg

POWER  
GAS

DRAIN  
1 1/4 Inch



GF90-C  
GAS FLAT GRIDDLE  
CABINET  
900

GAS  
CONSUMPTION  
10 Kw / Hr  
(35.000 BTU)

DIMENSION  
900 (W) X 750 (D)  
X 850/1000 mm (H)

GAS  
CONNECTION  
1/2 Inch

NET WEIGHT  
63 Kg

POWER  
GAS

DRAIN  
1 1/4 Inch

# GAS CHARCOAL PORTABLE **GC40-P** 400

DIMENSION  
400 (W) X 750 (D)  
X 335/460 mm (H)

GAS CONNECTION  
1/2 Inch

GAS CONSUMPTION  
7.9 Kw / Hr  
(27.000 BTU)

POWER  
GAS

NET WEIGHT  
48 Kg

COOKING  
SURFACE  
CAST IRON  
GRILL



GC60-P  
GAS CHARCOAL  
PORTABLE 600

GAS  
CONSUMPTION  
11.8 Kw / Hr  
(41.000 BTU)

DIMENSION  
600 (W) X 750 (D)  
X 335/460 mm (H)

GAS  
CONNECTION  
1/2 Inch

NET WEIGHT  
56 Kg

POWER  
GAS

COOKING SURFACE  
CAST IRON GRILL



GC90-P  
GAS CHARCOAL  
PORTABLE 900

GAS  
CONSUMPTION  
15.8 Kw / Hr  
(54.000 BTU)

DIMENSION  
320 (W) X 320 (D)  
X 77 mm (H)

GAS  
CONNECTION  
1/2 Inch

NET WEIGHT  
64 Kg

POWER  
GAS

COOKING SURFACE  
CAST IRON GRILL

# GAS CHARCOAL CABINET **GC40-C** 400

DIMENSION  
400 (W) X 750 (D)  
X 850/1000 mm (H)

GAS CONNECTION  
1/2 Inch

GAS CONSUMPTION  
7.9 Kw / Hr  
(27.000 BTU)

POWER  
GAS

COOKING ZONE  
2 x 300 x 300

NET WEIGHT  
63 Kg

COOKING  
SURFACE  
CAST IRON  
GRILL



GC60-C  
GAS CHARCOAL  
CABINET 600

GAS  
CONSUMPTION  
11,8 Kw/Hr  
(27.000 BTU)

DIMENSION  
600 (W) X 750 (D)  
X 850/1000 mm (H)

GAS  
CONNECTION  
1/2 INCH

NET WEIGHT  
75 Kg

POWER  
GAS

COOKING SURFACE  
CAST IRON GRILL

DRAIN  
1 1/4 INCH



GC90-C  
GAS CHARCOAL  
CABINET 900

GAS  
CONSUMPTION  
15,8 Kw/Hr  
(27.000 BTU)

DIMENSION  
900 (W) X 750 (D)  
X 850/1000 mm (H)

GAS  
CONNECTION  
1/2 INCH

NET WEIGHT  
89 Kg

POWER  
GAS

COOKING SURFACE  
CAST IRON GRILL

DRAIN  
1 1/4 INCH

# GAS NOODLE

## 4 HOLE **GNB-4H**

DIMENSION  
450 (W) X 750 (D)  
X 850/1000 mm (H)

GAS CONNECTION  
1/2 Inch

GAS CONSUMPTION  
17.5 Kw / Hr  
(60.000 BTU)

POWER  
GAS

NET WEIGHT  
55 Kg

WATER INLET  
1/2 Inch

NUMBER OF BASKET  
4

TANK CAPACITY  
21L

OUTLET & DRAIN  
1 Inch



# GAS NOODLE

## 3 HOLE **GNB-3H**

DIMENSION  
300 (W) X 750 (D)  
X 850/1000 mm (H)

GAS CONNECTION  
1/2 Inch

GAS CONSUMPTION  
15 Kw / Hr  
(51.000 BTU)

POWER  
GAS

NET WEIGHT  
48.6 Kg

WATER INLET  
1/2 Inch

NUMBER OF BASKET  
3

TANK CAPACITY  
18L

OUTLET & DRAIN  
1 Inch



# GAS NOODLE

## 6 HOLE **GNB-6H**

**DIMENSION**  
600 (W) X 750 (D)  
X 850/1000 mm (H)

**NUMBER OF BASKET**  
6

**GAS CONNECTION**  
1/2 Inch

**TANK CAPACITY**  
35L

**GAS CONSUMPTION**  
26.4 Kw / Hr  
(91.000 BTU)

**OUTLET & DRAIN**  
1 Inch

**POWER GAS**

**NET WEIGHT**  
70.3 Kg

**WATER INLET**  
1/2 Inch



**CANB-3H**  
AUTOMATIC GAS  
NOODLE COOKER  
3 HOLE

**GAS CONSUMPTION**  
15 Kw/Hr  
(51.000 BTU)

**DIMENSION**  
350 (W) X 750 (D)  
X 850/1000mm (H)

**POWER GAS**

**NET WEIGHT**  
58.6 Kg

**NUMBER OF BASKET**  
3

**GAS CONNECTION**  
1/2 Inch

**TANK CAPACITY**  
18L

**WATER INLET**  
1/2 Inch

**OUTLET & DRAIN**  
1 Inch

**CANB-36H**  
AUTOMATIC GAS  
NOODLE COOKER  
6 HOLE

**GAS CONSUMPTION**  
26.4 Kw/Hr  
(91.000 BTU)

**DIMENSION**  
700 (W) X 750 (D)  
X 850/1000mm (H)

**POWER GAS**

**NET WEIGHT**  
90.3 Kg

**NUMBER OF BASKET**  
6

**GAS CONNECTION**  
1/2 Inch

**TANK CAPACITY**  
35L

**WATER INLET**  
1/2 Inch

**OUTLET & DRAIN**  
1 Inch

# GAS FRYER

# PORTABLE **GFP-16**

# 1 TANK 1 BASKET

DIMENSION  
310 (W) X 660 (D)  
X 550 mm (H)

GAS CONNECTION  
1/2 Inch

GAS CONSUMPTION  
6 Kw/Hr ( 20.700 BTU)

POWER  
GAS

TEMP CONTROL RANGE  
40-180°C

OIL DRAIN  
1/2 Inch

OIL CAPACITY  
16L

NETT WEIGHT  
14 Kg



GDF-21  
GAS DEEP FRYER  
1 TANK 2 BASKET  
22L

DIMENSION  
400 (W) X 750 (D)  
X 850/1130 mm (H)

NET WEIGHT  
51KG

GAS CONNECTION  
1/2 Inch

TEMP CONTROL RANGE  
40-200°C

GAS  
CONSUMPTION  
20 Kw/Hr  
(62.100 BTU)

POWER  
GAS

OIL CAPACITY  
25L

OIL DRAIN  
1 1/2 Inch



GLF-45  
GAS LOW OIL  
FRYER 17L

DIMENSION  
450 (W) X 620 (D)  
X 850/1050 mm (H)

NET WEIGHT  
49.3KG

GAS CONNECTION  
1/2 Inch

TEMP CONTROL RANGE  
40-180°C

GAS  
CONSUMPTION  
15.2 Kw/Hr  
(52.000 BTU)

POWER  
GAS

OIL CAPACITY  
17L

OIL DRAIN  
1 1/2 Inch

COOKING DIMENSION  
440 X 370mm

# GAS STOCK POT

## 50 **GSP-50**

DIMENSION  
500 (W) X 500 (D)  
X 500 mm (H)

GAS CONNECTION  
1/2 Inch

GAS CONSUMPTION  
21 Kw / Hr  
(72.000 BTU)

POWER  
GAS

NET WEIGHT  
20 Kg



# GAS STOCK POT

## 70 **GSP-70**

DIMENSION  
700 (W) X 750 (D)  
X 500/1200 mm (H)

GAS CONNECTION  
1/2 Inch

GAS CONSUMPTION  
21 Kw / Hr  
(72.000 BTU)

POWER  
GAS

NET WEIGHT  
39 Kg



# GAS KWALI RANGE 1 BURNER **GKR-1B**

**DIMENSION**  
750 (W) X 800 (D)  
X 800/1200 mm (H)

**OUTLET & DRAIN**  
2 Inch

**GAS CONNECTION**  
1/2 Inch

**WATER INLET**  
1/2 Inch

**GAS CONSUMPTION**  
36.6 Kw / Hr  
(125.000 BTU)

**NETT WEIGHT**  
65 Kg

**POWER**  
GAS



**GKR-2B**  
GAS KWALI RANGE  
2  
BURNER

**GAS CONSUMPTION**  
73.2 Kw/Hr  
(250.000 BTU)

**DIMENSION**  
1500 (W) X 800 (D)  
X 800/1200mm (H)

**OUTLET & DRAIN**  
2 Inch

**NETT WEIGHT**  
116 Kg

**POWER**  
Gas

**GAS CONNECTION**  
1/2 Inch

**WATER INLET**  
1/2 Inch

**GKB-1B**  
GAS KWALI RANGE  
BLOWER 1  
BURNER 1 SOUP

**GAS CONSUMPTION**  
46.8 Kw/Hr  
(160.000 BTU)

**DIMENSION**  
1100 (W) X 1050 (D)  
X 800/1200mm (H)

**OUTLET & DRAIN**  
2 Inch

**NETT WEIGHT**  
348 Kg

**POWER**  
Gas & Electric

**GAS CONNECTION**  
3/4 Inch

**ELECTRIC**  
400 Watt

**WATER INLET**  
1/2 Inch

**GKB-2B**  
GAS KWALI RANGE  
BLOWER 2  
BURNER 2 SOUP

**GAS CONSUMPTION**  
93.6 Kw/Hr  
(320.000 BTU)

**DIMENSION**  
2150 (W) X 1150 (D)  
X 800/1200mm (H)

**OUTLET & DRAIN**  
2 Inch

**NETT WEIGHT**  
517 Kg

**POWER**  
Gas & Electric

**GAS CONNECTION**  
3/4 Inch x 2 Inlet

**ELECTRIC**  
400 Watt x 2

**WATER INLET**  
1/2 Inch x 2 Inlet

# GAS INFRARED SALAMANDER

**GSL-4B**

DIMENSION  
620 (W) X 440 (D)  
X 610 mm (H)

GAS CONNECTION  
1/2 Inch

GAS CONSUMPTION  
7 Kw / Hr  
(24.150 BTU)

POWER  
GAS

NET WEIGHT  
40 Kg



# GAS 3 DECK STEAMER

**GDS-3**

DIMENSION  
995 (W) X 860 (D)  
X 1845 mm (H)

GAS CONNECTION  
3/4 Inch

GAS CONSUMPTION  
26.4 Kw / Hr  
(91.000 BTU)

POWER  
GAS

NET WEIGHT  
173 Kg



# **GAS TILTING** **GBP-60**

## **BRAISING PAN 60L**

DIMENSION  
800 (W) X 900 (D)  
X 970mm (H)

GAS CONNECTION  
1/2 Inch

GAS CONSUMPTION  
24 Kw / Hr  
(72.450 BTU)

POWER NETT WEIGHT  
GAS 100 Kg



# **GAS TILTING** **GBP-80**

## **BRAISING PAN 80L**

DIMENSION  
800 (W) X 900 (D)  
X 970 mm (H)

GAS CONNECTION  
1/2 Inch

GAS CONSUMPTION  
26 Kw / Hr  
(89.700 BTU)

POWER NETT WEIGHT  
GAS 140 Kg



# GAS TILTING BRATT PAN 100L **GBP-100**

DIMENSION  
1250 (W) X 900 (D)  
X 900 mm (H)

GAS CONNECTION  
1/2 Inch

GAS CONSUMPTION  
26 Kw / Hr  
(89.700 BTU)

POWER  
GAS

NET WEIGHT  
159 Kg



GBP-150  
GAS TILTING BRATT  
PAN 150L

DIMENSION  
1250 (W) X 900 (D)  
X 900 mm (H)

NETT WEIGHT  
162 Kg

GAS  
CONSUMPTION  
32 Kw / Hr  
(109.000 BTU)

GAS  
CONNECTION  
3/4 Inch

POWER  
GAS



GBP-300  
GAS TILTING BRATT  
PAN 300L

DIMENSION  
1790 (W) X 1200 (D)  
X 900 mm (H)

NETT WEIGHT  
209 Kg

GAS  
CONSUMPTION  
48 Kw / Hr  
(163.000 BTU)

GAS  
CONNECTION  
3/4 Inch

POWER  
GAS

# GAS SOUP KETTLE 100L

**GSK-100**

DIMENSION  
800 (W) X 900 (D)  
X 970mm (H)

GAS CONNECTION  
1/2 Inch

GAS CONSUMPTION  
26 Kw / Hr  
(89.700 BTU)

POWER  
GAS

NETWEIGHT  
140 Kg



# GAS SOUP KETTLE 150L

**GSK-150**

DIMENSION  
800 (W) X 900 (D)  
X 970 mm (H)

GAS CONNECTION  
1/2 Inch

GAS CONSUMPTION  
26 Kw / Hr  
(89.700 BTU)

POWER  
GAS

NETT WEIGHT  
140 Kg



# GAS TILTING BOILING PAN

## 80L **GTS-80**

**DIMENSION**

1190 (W) X 900 (D)  
X 900/1050 mm (H)

**GAS CONNECTION**

1/2 Inch

**GAS CONSUMPTION**

26 Kw / Hr  
(89.700 BTU)

**POWER**

GAS

**NET WEIGHT**

157 Kg



GTS-100  
GAS TILTING  
BOILING PAN  
100L

GAS  
CONSUMPTION  
26 Kw / Hr  
(89.700 BTU)

DIMENSION  
1190 (W) X 900 (D)  
X 900/1050 mm (H)

GAS  
CONNECTION  
1/2 Inch

NETT WEIGHT  
162 Kg

POWER  
GAS



GTS-150  
GAS TILTING  
BOILING PAN  
150L

GAS  
CONSUMPTION  
32 Kw / Hr  
(109.000 BTU)

DIMENSION  
1250 (W) X 900 (D)  
X 900/1050 mm (H)

GAS  
CONNECTION  
3/4 Inch

NETT WEIGHT  
169 Kg

POWER  
GAS



GTS-300  
GAS TILTING  
BOILING PAN  
300L

GAS  
CONSUMPTION  
48 Kw / Hr  
(109.000 BTU)

DIMENSION  
1580 (W) X 1200 (D)  
X 900 mm (H)

GAS  
CONNECTION  
3/4 Inch

NETT WEIGHT  
214 Kg

POWER  
GAS

# MFK COOK



## PT MULTI FLASHINDO KARISMA

### □ JAKARTA (Head Office)

Jl. Hayam Wuruk 114 Blok A No. 4  
Maphar, Jakarta - Indonesia 11160  
Telepon : +62 21 626 8758  
Whatsapp : +62 811 1210 6803  
Email : sales.dept@mfk.co.id

### □ SURABAYA

Ruko Royal Crown Palace RA 2  
Jl. H. Anwar Hamzah, Kp. Baru, Tambakoso,  
Kec. Waru, Kab. Sidoarjo, Jawa Timur 61256  
Telepon : +62 31 3592 9091  
Whatsapp : +62 811 1210 6803  
Email : sales.sby@mfk.co.id

### □ BALI

Jl. Sunset Road No.108 B, Kec. Kuta  
Kel. Badung, Bali - Indonesia 80361  
Telepon : +62 361 934 2633  
Whatsapp : +62 811 1210 6803  
Email : sales.bali@mfk.co.id

### □ SERVICE CENTER

Jl. Kamal Raya No.9 Unit B, RT 01/ RW 06  
Tegal Alur, Cengkareng - Indonesia 11820  
Telepon : +62 21 5595 2523  
Whatsapp : +62 811 9144 614  
Email : service.center@mfk.co.id