



# PRODUCT CATALOG



Source - Supply - Solution - Design

[www.mfk.co.id](http://www.mfk.co.id)

Foodservice Equipment & Supplies



**COMMERCIAL BLENDER**

MODEL : MX1500XTP  
SIZE (mm) : 210 W x 216 D x 406 H  
POWER : 1560 Watt  
CAPACITY : 1.4 L  
WEIGHT : 6,16 Kg



**FULLY AUTOMATIC COFFEE MACHINE**

MODEL : G 500 KALEA  
SIZE (mm) : 368 W x 586 D x 783 H  
POWER : 3200 Watt  
CAPACITY : 0,8 L (Coffee), 0,8 L (Steam)  
WEIGHT : ± 47 Kg



**SEMI AUTOMATIC COFFEE MACHINE**

MODEL : GT 5 PRO 2 GROUP  
SIZE (mm) : 760 W x 530 D x 468 H  
POWER : 3750 Watt  
CAPACITY : 13 L  
WEIGHT : 55 Kg



**SEMI AUTOMATIC COFFEE MACHINE**

MODEL : INDIGO SAE 2 GROUP  
SIZE (mm) : 740 W x 540 D x 515 H  
POWER : 3700 Watt  
CAPACITY : 210,5 L  
WEIGHT : 62 Kg



**AUTOMATIC COFFEE MACHINE**

MODEL : ROYAL OTC  
SIZE (mm) : 280 W x 398 D x 460 H  
POWER : 1400 Watt  
CAPACITY : 2,5 L  
WEIGHT : 10,5 Kg



**ELECTRIC MIXER (Triple Motor Spindle)**

MODEL : HMD400R  
SIZE (mm) : 320 W x 230 D x 550 H  
POWER : 900 Watt  
CAPACITY : 0,94 L / Cup  
WEIGHT : 16,8 Kg



**WATER BOILER**

MODEL : OMG-WB10L  
SIZE (mm) : 185 W x 285 D x 620 H  
POWER : 2500 Watt  
CAPACITY : 10 L  
WEIGHT : 5.3 Kg



**ICE MAKER MACHINE - CUBE ICE**

MODEL : ARC-IMS90  
SIZE (mm) : 499 W x 404 D x 779 H  
POWER : 275 Watt  
PRODUCTION : 45 Kg / 24 Hour  
WEIGHT : 26.5 Kg



**ICE MAKER MACHINE**

MODEL : ARC-IMSL150  
SIZE (mm) : 855 H x 585 D x 1700 H  
POWER : 1300 Watt / 1 Ph  
PRODUCTION : 150 Kg / 24 Hour  
WEIGHT : 82 Kg



**ICE MAKER MACHINE**

MODEL : ARC-IMST120  
SIZE (mm) : 660 W x 650 D x 985 H  
POWER : 510 Watt / 1 Ph  
PRODUCTION : 120 Kg / 24 Hour  
WEIGHT : 54 Kg



**SOFT SERVICE ICE CREAM MACHINE**

MODEL : BJ188S  
SIZE (mm) : 540 W x 665 D x 790 H  
POWER : 1850 Watt / 1 Ph  
CAPACITY : 20 L  
WEIGHT : 90 Kg



**SOFT SERVICE ICE CREAM MACHINE**

MODEL : BJ188C  
SIZE (mm) : 540 W x 710 D x 1350 H  
POWER : 1850 Watts / 1 Ph  
CAPACITY : 18 - 20 L  
WEIGHT : 100 Kg



**COUNTERTOP SOFT SERVE ICE CREAM MACHINE**

MODEL : ST 16 E  
SIZE (mm) : 210 W x 554 D x 740 H  
POWER : 1050 Watt / 1 Ph  
CAPACITY : 16 L/Hr  
WEIGHT : 43 Kg



**SLUSH MACHINE MINI SERIES (1 Bowl)**

MODEL : ARC SLUSH 3L  
SIZE (mm) : 238 H x 490 D x 545 H  
POWER : 250 Watt (220 V/50 Hz)  
CAPACITY : 3 Liter (1 Bowl)  
WEIGHT : 18 Kg



**SLUSH MACHINE MINI SERIES (1 Bowl)**

MODEL : ARC-2 SLUSH 3L  
SIZE (mm) : 320 H x 490 D x 545 H  
POWER : 350 Watt (220 V/50 Hz)  
CAPACITY : 6 Liter (2 Bowl)  
WEIGHT : 28 Kg



**SLUSH MACHINE MINI SERIES (1 Bowl)**

MODEL : ARC-3 SLUSH 3L  
SIZE (mm) : 480 H x 490 D x 545 H  
POWER : 500 Watt (220 V/50 Hz)  
CAPACITY : 9 Liter (3 Bowl)  
WEIGHT : 38 Kg

**CURVE CAKE SHOWCASE 900 – 3 TIER**

MODEL : ARC-900C3  
 SIZE (mm) : 900 W x 700 D x 1240 H  
 POWER : 450 Watts/ 1 Ph  
 CAPACITY : 265 L  
 WEIGHT : 105 Kg

**CURVE CAKE SHOWCASE - 3 TIER**

MODEL : RCS-12SS-S  
 SIZE (mm) : 900 W x 680 D x 1400 H  
 POWER : 550 Watt / 1 Ph  
 WEIGHT : 105 Kg

**DRAWER CAKE SHOWCASE**

MODEL : GN-1200XD-CT  
 SIZE (mm) : 1200 W x 850 D x 1175 H  
 POWER : 590 Watt / 1 Ph  
 WEIGHT : 110 Kg

**COUNTERTOP RECTANGULAR CAKE SHOWCASE**

MODEL : ARC 900 RT  
 SIZE (mm) : 900 W x 530 D x 730 H  
 POWER : 270 Watts/ 1 Ph  
 CAPACITY : 160 L  
 WEIGHT : 80 Kg

**GELATO SHOWCASE 12 PAN**

MODEL : VAR 12 H  
 SIZE (mm) : 1250 W x 1145 D x 1320 H  
 POWER : 1,111 kW (Total 18,7 kWh/24h)  
 VOLTAGE : 220 V / 50-60 Hz / 1 Phase  
 WEIGHT : 263 Kg

**ICE CREAM DISPLAY CASE CORAL SERIES**

MODEL : VCB 12 UH  
 SIZE (mm) : 1250 W x 1052 D x 1200 H  
 POWER : 1,355 kW  
 VOLTAGE : 230 V / 50-60 Hz / 1 Phase  
 WEIGHT : 254 Kg

**INDUCTION 4 HOB CABINET**

MODEL : I4H-CB3.5  
 SIZE (mm) : ± 750 W x 750 D x 850/1000 H  
 POWER : ± 14 kW (Per Hob: 4 x 3.5 kW)  
 VOLTAGE : 380 V / 50-60 Hz / 3 Phase  
 WEIGHT : ± 40 - 45 Kg

**GAS STOVE OVEN 4 BURNER**

MODEL : GS48-OV  
 SIZE (mm) : 650 W x 750 D x 850/1000 H  
 OVEN SIZE (mm) : 500 W x 500 D x 600 H  
 GAS CONSUM. : 37.9 kW / hr  
 WEIGHT : 136 Kg

**INDUCTION WOK**

MODEL : IW-10  
 SIZE (mm) : 700 W x 800 D x 800/1200 H  
 POWER : 10 kW / hr  
 VOLTAGE : 360-410V / 50-60 Hz / 3 Phase  
 WEIGHT : 58,8 Kg

**GAS FLAT GRIDDLE CABINE**

MODEL : GF90-C  
 SIZE (mm) : 900 W x 750 D x 850/1000 H  
 POWER : Gas  
 GAS CONSUM. : 10 kW / hr  
 WEIGHT : 63 Kg

**INDUCTION NOODLE BOILER 4 HOLE**

MODEL : JIN08  
 SIZE (mm) : 50 W x 750 D x 850/1000 H  
 POWER : 8 kW / hr  
 VOLTAGE : 360-410V / 50-60 Hz / 3 Phase  
 CAPACITY : 21 L  
 WEIGHT : 49,37 Kg

**INDUCTION SAVE OIL FRYER**

MODEL : JDF-10  
 SIZE (mm) : 500 W x 750 D x 850/1100 H  
 POWER : 10,5 kW / hr  
 VOLTAGE : 360-410V / 50-60 Hz / 3 Phase  
 OIL CAPACITY : 17 L  
 WEIGHT : 58,8 Kg

**GAS DEEP FRYER**

MODEL : GDF-2B  
 SIZE (mm) : 400 W x 750 D x 850/1200 H  
 CONSUMPTION : 05.000 Btu/ Hr/ 30 kW / hr  
 TEMPERATURE : 340 - 180 °C  
 OIL CAPACITY : 21 L  
 WEIGHT : 51 Kg

**GAS SOLSTICE ECONOMY FRYER**

MODEL : SG 14 / SG 18  
 SIZE (mm) : 381 W x 760 D x 1167 H  
 CONSUMPTION : 122.000 (Btu/ Hr)  
 CAPACITY (Oil) : 22,6 L  
 WEIGHT : 82 Kg

**ELECTRIC DEEP FRYERS**

MODEL : FE 77 E  
 SIZE (mm) : 540 W x 420 D x 300 H  
 POWER : 3000 Watt/ Tank  
 CAPACITY : 2 x 8 L  
 WEIGHT : 14 Kg

**GAS DIRECT HEATING PLANETARY COOKING MIXER**

MODEL : ALPHA-CG300  
 SIZE (mm) : ± 1530 W x 2134 D x 1878 H  
 POWER : 380V / 3-Phase / 50Hz (standar)  
 CAPACITY : 300 L  
 WEIGHT : 930 kg (Nett), ± 1000 kg (Gross)



## ScanBox ⚡

### BANQUET LINE ExP

MODEL : BLSCC16  
 SIZE (mm) : 740 W x 990 D x 1757 H  
 CAPACITY : 16 Tray GN 2/1  
 POWER : 387.2 Watt/ 1.76 A  
 WEIGHT : 100 Kg



## SACO ⚡

### HIGH SPEED OVEN

MODEL : V2  
 SIZE (mm) : 693 W x 383 D x 630 H  
 POWER : 2900 Watt/ 1 Ph  
 CAPACITY : 17 L  
 WEIGHT : 75 Kg



## meichu ⚡

### SPIRAL DOUGH MIXER

MODEL : MLS12  
 SIZE (mm) : 440 W x 780 D x 920 H  
 POWER : 0.85 / 1.5 kW  
 CAPACITY : 30 L (Bowl)/ 12 Kg (Powder)  
 WEIGHT : 145 Kg



## meichu ⚡

### GAS RICE STEAMER

MODEL : MC-R24  
 SIZE (mm) : 1400 W x 660 D x 1720 H  
 POWER : 1.4 - 2.0 (LPG)/ 2.0 - 2.4 (LNG) Kg/h  
 CAPACITY : Max. 96 Kg (Rice)/ 102 Kg (Ribs)  
 WEIGHT : 160 Kg



## meichu ⚡

### DOUGH SHEETER

MODEL : MC-550BL  
 SIZE (mm) : 2700 W x 960 D x 1100 H  
 POWER : 0.55 kW  
 VOLTAGE : 220V/380V / 50-60 Hz / 3 Phase  
 WEIGHT : 248 Kg



## meichu ⚡

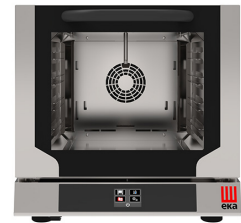
### GAS CONVECTION OVEN

MODEL : MFD-5D  
 SIZE (mm) : 780 W x 1235 D x 690 H  
 POWER : 0,3 kW  
 VOLTAGE : 220/230 V / 50-60 Hz / 1 Phase  
 WEIGHT : 150 Kg



### ELECTRIC CONVECTION OVEN WITH MULTIFUNCTION

MODEL : EKF 423 NM  
 SIZE(mm) : 590 W x 709 D x 589 H  
 CAPACITY : 4 Trays (429 x 345 mm)  
 POWER : 2600 Watt/ 1 Ph  
 WEIGHT : 36,4 Kg



### ELECTRIC COMBI OVEN WITH TOUCH SCREEN

MODEL : EKF 423 N T UD  
 SIZE(mm) : 590 W x 709 D x 589 H  
 CAPACITY : 4 Trays (429 x 345 mm)  
 POWER : 3150 Watt/ 1 Ph  
 WEIGHT : 38 Kg



### ELECTRIC COMBI OVEN ELECTROMECHANIC

MODEL : MKF 511 S  
 SIZE (mm) : 730 W x 855 D x 700 H  
 POWER : 7800 Watt/ 3 Ph  
 CAPACITY : 5 Trays (1/1 GN)  
 WEIGHT : 78,4 Kg



### ELECTRIC COMBI OVEN BLACK MASK ELECTRONIC CONTROL

MODEL : MKF 711 BM  
 SIZE(mm) : 730 W x 849 D x 850 H  
 POWER : 10.400 Watt/ 3 Ph  
 CAPACITY : 7 Trays (1/1 GN)  
 WEIGHT : 96 Kg



### GAS BAKERY COMBI OVEN WITH TOUCH SCREEN

MODEL : MKF 1064 G TS  
 SIZE(mm) : 850 W x 1035 D x 1230 H  
 POWER : 13.5 kW - 500 Watt / 1 Ph  
 CAPACITY : 6 Trays (600 x 400 mm)  
 WEIGHT : 158 Kg



### GAS COMBI OVEN WITH TOUCH SCREEN

MODEL : MKF 2011 G TS  
 SIZE(mm) : 930 W x 1160 D x 2060 H  
 POWER : 30 kW - 1200 Watt/ 1 Ph  
 CAPACITY : 20 Trays (1/1 GN)  
 WEIGHT : 277 Kg



## zanolli ⚡

### MODULAR TUNNEL OVEN PIZZA

MODEL : SYNTHETIS 06/40 GAS/MC DIG  
 SIZE (mm) : 715 W x 580 D x 630 H  
 POWER : GAS / 0.44 kW - 1 ph  
 DIA. PIZZA : ø 20-50 cm  
 WEIGHT : 30 Kg



## zanolli ⚡

### SMALL ELECTRIC TUNNEL OVEN PIZZA

MODEL : SYNTHETIS 11/65 E/MC DIG  
 SIZE (mm) : 1400 W x 2000 D x 550 H  
 POWER : 18.5 kW / 3 ph  
 DIA. PIZZA : ø 20-50 cm  
 WEIGHT : 222 Kg



## zanolli ⚡

### SMALL ELECTRIC TUNNEL OVEN PIZZA

MODEL : ROMEO 76  
 SIZE (mm) : 750 W x 310 D x 320 H  
 POWER : 3.0 kW / 3 ph  
 DIA. PIZZA : ø 20-50 cm  
 WEIGHT : 18 Kg



## zanolli ⚡

### DOME PIZZA OVEN

MODEL : AVGVSTO 6  
 SIZE (mm) : 1620 W x 1800 D x 2160 H  
 POWER : 14.4 kW (Max)  
 CAPACITY : ± 90 Pizza/Jam (ø 33 cm)  
 WEIGHT : 455 Kg



**SOUS VIDE MACHINE**

MODEL : VACOOK 15  
SIZE (mm) : 150 W x 240 D x 380 H  
POWER : 2100 Watt/ 1 Ph  
WATER CAPACITY : 50 L



**VACUUM MACHINE**

MODEL : MISTRAL  
SIZE (mm) : 550 W x 600 D x 490 H  
POWER : 550 Watt/ 1 Ph  
WEIGHT : 60 Kg



**VACUUM MACHINE**

MODEL : TORNADO  
SIZE (mm) : 890 W x 780 D x 41150 H  
POWER : 1800 Watt/ 1 Ph  
WEIGHT : 220 Kg



**UNDERCOUNTER REFRIGERATION**

MODEL : AWR1500L2  
SIZE (mm) : 1500 W x 700 D x 850 H  
POWER : 350 W  
CAPACITY : 260 L  
WEIGHT : 145 Kg



**REFRIGERATION**

MODEL : MLS12  
SIZE (mm) : 1220 W x 880 D x 1965 H  
POWER : 750 W  
CAPACITY : 970 L  
WEIGHT : 150-200 Kg



**BLAST CHILLER**

MODEL : Activa MXE7.30  
SIZE (mm) : 798 x 815 D x 2140 H  
POWER : 1500 Watt / 1 Ph  
CAPACITY : 7 Trays (600 x 400 mm)  
WEIGHT : 125 Kg



**RETARDER PROVER CABINET**

MODEL : Time FLFT901B  
SIZE (mm) : 835 W x 730 D x 2140 H  
POWER : 3000 Watt / 1 Ph  
CAPACITY : 18 Trays (600 x 400 mm)  
WEIGHT : 130 Kg



**BLAST FREEZER**

MODEL : Evox FT14.50  
SIZE (mm) : 798 W x 583 D x 1900 H  
POWER : 3000 watt/ 3 Ph  
CAPACITY : 14 Trays (600 x 400 mm)  
WEIGHT : 215 Kg



**ICE MAKER MACHINE (Cube Ice Type)**

MODEL : IM-45NR-25  
SIZE (mm) : 503 W x 456 D x 840 H  
POWER : 330 Watt / 1 Ph  
WEIGHT : 46 Kg  
CAPACITY : 32 - 44 Kg/24Hr



**ICE MAKER MACHINE (Cube Ice Type)**

MODEL : IM 30CA-25  
SIZE (mm) : 398 W X 510 D X 695 H  
POWER : 250 watt/ 1 Ph  
WEIGHT : 39 Kg  
CAPACITY : 225 - 30 Kg/24Hr



**UNDERCOUNTER CHILLER**

MODEL : RTC-120MNA  
SIZE (mm) : 1200 W x 600 D x 850 H  
POWER : 350 watt/ 1 Ph  
WEIGHT : 67 Kg  
CAPACITY : 231 L



**UPRIGHT 4 DOORS**

MODEL : HRW-127MS4  
SIZE (mm) : 1200 W x 810 D x 2050 H  
POWER : 343 Watt / 1 Ph  
WEIGHT : 168 Kg  
CAPACITY : 1119 L



**ROLL-IN BLAST FREEZER**

MODEL : Evox FTW 20.170  
SIZE (mm) : 1250 W x 1530 D x 2170 H  
POWER : 7500 watt/ 3 Ph  
CAPACITY : 20 Trays (600 x 400 mm)  
WEIGHT : 300 Kg



**DISHWASHING MACHINE**

MODEL : OCEAN 360  
SIZE (mm) : 575 W x 605 D x 820 H  
POWER : 5500 Watt/ 3 Ph  
CAPACITY : 35 Rack/ Hr  
WEIGHT : 60 Kg



**COMMERCIAL DISHWASHER**

MODEL : PDX 1003  
SIZE (mm) : 600 W x 600 D x 810 H  
POWER : 1.5 /2.0 /4.0 /5.0 Kw/ 1 Ph  
CAPACITY : 12 L  
WEIGHT : 65 Kg



**COMMERCIAL DISHWASHER**

MODEL : PDX-1001A-1  
SIZE (mm) : 680 W x 780 D x 1355 H  
POWER : 5.0/ 7.0/ 9.0/ 12.0 Kw/ 1 Ph  
CAPACITY : 42 L  
WEIGHT : 97 Kg

**GAS PIZZA OVEN**

MODEL : MODERNO PORTABLE  
 SIZE (mm) : 550 W x 517 D x 912 H  
 POWER : GAS LPG  
 CAPACITY : 1 Pizzas at time (Ø 30 cm)  
 up to 40 pizzas / hour  
 WEIGHT : 35 Kg

**GAS PIZZA OVEN**

MODEL : NANO  
 SIZE (mm) : 730 W x 550 D x 1050 H  
 POWER : GAS LPG  
 CAPACITY : 1 Pizzas at time (Ø 30 cm)  
 up to 40 pizzas / hour  
 WEIGHT : 54 Kg

**GAS PIZZA OVEN**

MODEL : FUTURO 4 PIZZE  
 SIZE (mm) : 1100 W x 840 D x 1510 H  
 POWER : GAS LPG  
 CAPACITY : 4 Pizzas at time (Ø 30 cm)  
 up to 40 pizzas / hour  
 WEIGHT : 106 Kg

**WOOD PIZZA OVEN**

MODEL : NAPOLI M120  
 SIZE (mm) : 1150 W x 892 D x 1600 H  
 POWER : WOOD FIRE (75 Kg/ Hour)  
 CAPACITY : 5 Pizzas at time (Ø 30 cm)  
 up to 100 pizzas / hour  
 WEIGHT : 1200 Kg

**SOCIAL GRILL**

MODEL : OFYR CLASSIC 100  
 SIZE (mm) : 980 W x 980 D x 1000 H  
 POWER : Wood Fyer & Charcoal  
 MATERIAL : Corten Steel  
 WEIGHT : 112 Kg

**SOCIAL GRILL**

MODEL : OFYR CLASSIC STORAGE  
 100 PRO  
 SIZE (mm) : 1000 W x 1000 D x 1010 H  
 POWER : Wood Fyer & Charcoal  
 MATERIAL : Corten Steel  
 WEIGHT : 124 Kg

**SOCIAL GRILL**

MODEL : OFYR ISLAND CORTEN 100  
 TEAK WOOD  
 SIZE (mm) : 1000 W x 1700 D x 980 H  
 POWER : Wood Fyer & Charcoal  
 MATERIAL : Corten Steel  
 WEIGHT : 167 Kg

**SOCIAL GRILL**

MODEL : OFYR XL CORTEN  
 SIZE (mm) : 1490 W x 1490 D x 1080 H  
 POWER : Wood Fyer & Charcoal  
 MATERIAL : Corten Steel  
 WEIGHT : 230,5 Kg

**CHARCOAL OVEN**

MODEL : PIRA LUX 50 Inox  
 SIZE (mm) : 500 W x 613 D x 550 H  
 POWER : Charcoal  
 WEIGHT : 101 Kg

**CHARCOAL OVEN**

MODEL : PIRA LUX 70 AB  
 SIZE (mm) : 700 W x 613 D x 690 H  
 POWER : Charcoal  
 WEIGHT : 146 Kg

**CHARCOAL OVEN**

MODEL : PIRA LUX 70 SD  
 SIZE (mm) : 700 W x 613 D x 690 H  
 POWER : Charcoal  
 WEIGHT : 155 Kg

**CHARCOAL OVEN**

MODEL : PIRA LUX 70 ED  
 SIZE (mm) : 800 W x 650 D x 690 H  
 POWER : Charcoal  
 WEIGHT : 187 Kg

**CHARCOAL PARRILLA GRILL WITH ELECTRIC BLOWER**

MODEL : MCP 1200 (2 Wheels)  
 SIZE (mm) : 1200 W x 750 D x 850/1500 H  
 POWER : Charcoal + 120 Watt/ 1 Ph  
 MATERIAL : Stainless Steel 304  
 WEIGHT : 215 Kg

**HEXAGONAL BRIQUETTE CHARCOAL**

MODEL : HEXAGONAL BRIQUETTE  
 SIZE (mm) : H 80 x D 50/ Pcs Charcoal  
 MATERIAL : Mix Tamarine & Coconut  
 WEIGHT : 10 Kg/ Caton

Untuk pembelian online,  
 silahkan mengakses Tokopedia  
 PT MFK dan untuk informasi  
 lebih lanjut silahkan konsumen  
 dapat menghubungi kontak  
 whatsapp di bawah ini atau  
 scan QR Code di samping.

+62 811-1210-6803

mfk\_pt MFK PT MFK\_PT  
 mfk pt MFK Channel



**SCAN ME FOR MORE INFO**