



CUTLERY-PRO

CATALOG 2025

SPECIALIZED IN KITCHENWARE & FOOD SERVICE PRODUCT



PT MULTI FLASHINDO KARISMA

CUTLERY-PRO

CATALOG 2025



We are professional for
THE PROFESSIONAL



We are professional for HMP FOODECO-KS- USA

A leading manufacture of Professional cutlery since 1981. The Brand was Registered and Patent in USA. Produce the broadest line of Professional cutlery for Commercial, Food Service, Catering and Retail markets.



SUPERIOR STEEL:

German Molybdenum Vanadium
X50CrMoV15 Steel Alloy.

The stainless steel X50CrMoV15 is
renowned for its excellent mechanical
qualities, strong corrosion resilience,
and toughness.



HOT DROP FORGED:

One Piece Hot Drop Forged, Full Tang
with Three Rivet Design.



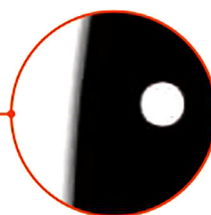
RAZOR-SHARP EDGE:

German Molybdenum Vanadium
X50CrMoV15 Steel Alloy.
The stainless steel X50CrMoV15
is renowned for its excellent
mechanical qualities, strong
corrosion resilience, and
toughness.



NSF-CERTIFIED:

NSF Certified, meet health and
safety standards, Dishwasher
Safe & Sterishield Anti-Bacterial
protection available.

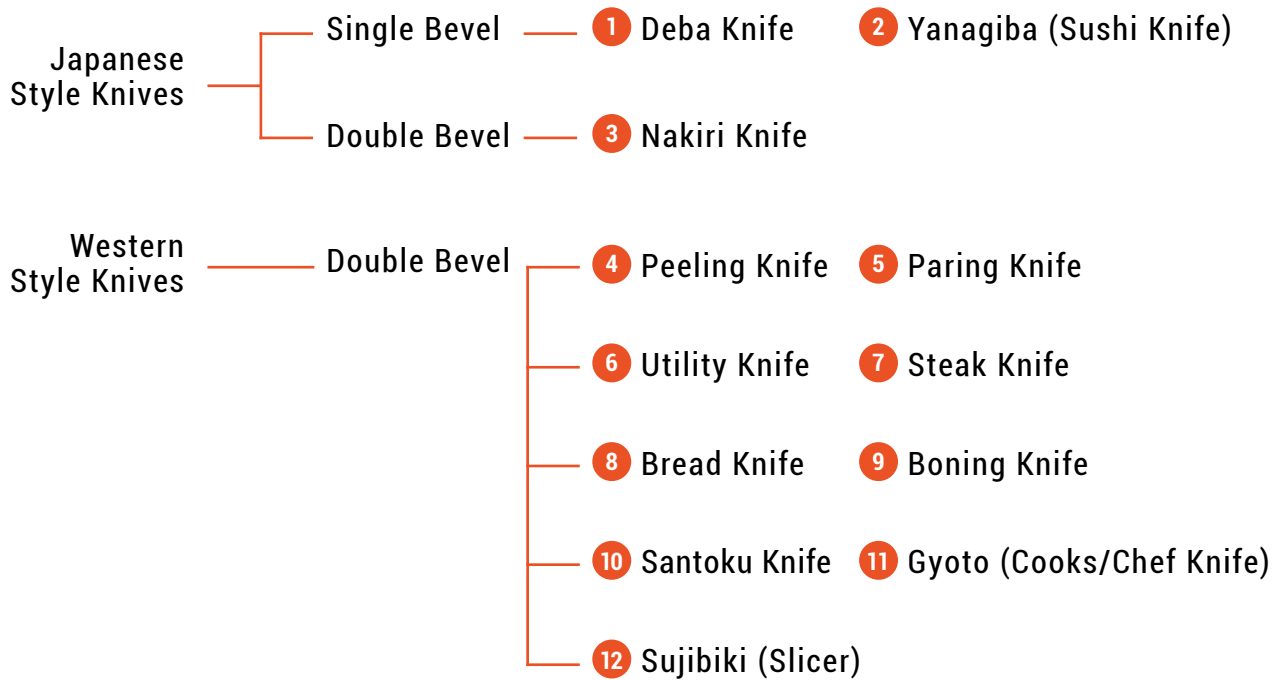


SAFE TOUCH:

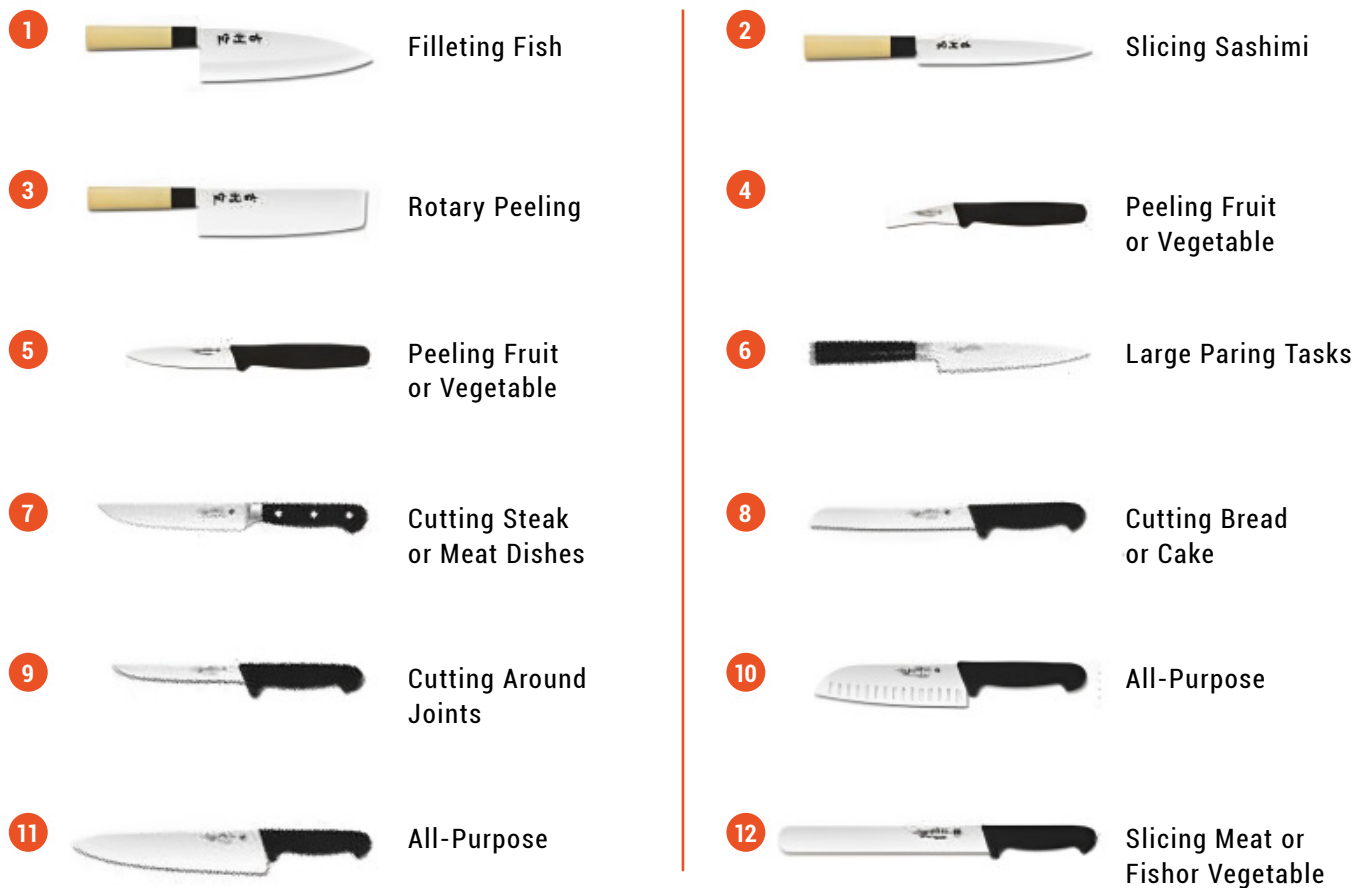
Ergonomic, Slip Resistant with
Derlin, DUPONT resin. Seamless
Design on Handle.



TYPE OF KNIFE



Images of the knives along with their respective uses:



CLASSIC, FORGED

- One Piece Hot Drop Forged From German Molybdenum Vanadium X50CrMoV15 Steel Alloy, Ice-Hardened Available.
- Skillfully Honed Chef'sEdge™ Cutting Edge, Laser Angle Tested, Enhanced Sharpness, Edge Holding & Ease of Re-Sharpening.
- Ergonomic, Slip Resistant Derlin®, DuPONT® resin. Seamless Design on Handle.
- NSF Certified, Meet Health and Safety Standards, Dishwasher Safe and SteriShield® Anti-Bacterial Protection.



FORGED PEELING KNIFE

Item: FR-9807-65-BK301
Size: 2.5" (65mm)



FORGED PARING KNIFE

Item: FR-9806-100-BK301
Size: 4" (100mm)



FORGED STEAK KNIFE

Item: FR-9802-130-BK301
Size: 5" (130mm)



FORGED BONING KNIFE

Item: FR-9808-150-BK301
Size: 6" (150mm)



FORGED BONING KNIFE (SEMI FLEX)

Item: FR-9808-150SF-BK301
Size: 6" (150mm)



FORGED CHEESE KNIFE

Item: FR-9864-160-BK301
Size: 6.25" (160mm)



FORGED CARVING KNIFE

Item: FR-9244-150-BK301
Size: 6" (150mm)



FORGED SANTOKU, GRANTON

Item: FR-9821-180G-BK301
Size: 7" (180mm)



FORGED CLEAVER, CHOPPER

Item: FR-9835-180-BK301
Size: 7" (180mm)



FORGED BREAD KNIFE

Item: FR-9855-200-BK301
Size: 8" (200mm)



FORGED CLEAVER, SLICER, GRANTON

Item: FR-9834-180G-BK301
Size: 7" (180mm)



FORGED CARVING KNIFE

Item: FR-9804-150-BK301, 200, 250
Size: 6" (150mm), 8" (200mm), 10" (250mm)



FORGED SALMON KNIFE, GRANTON

Item: FR-9252-300G-BK301
Size: 12" (300mm)



FORGED ROAST SLICER, PLAIN

Item: FR-9866-250P-BK301, 300P
Size: 10" (250mm), 12" (300mm)



FORGED ROAST SLICER, GRANTON

Item: FR-9866-250G-BK301, 300G
Size: 10" (250mm), 12" (300mm)



FORGED ROAST SLICER, SERRATED

Item: FR-9866-250S-BK301, 300S
Size: 10" (250mm), 12" (300mm)



FORGED COOKS KNIFE

Item: FR-2801-150-BK301, 200
Size: 6" (150mm), 8" (200mm)



FORGED COOKS KNIFE

Item: FR-2801-250-BK301, 300
Size: 10" (250mm), 12" (300mm)

Cutlery-Pro®
We are professional for
THE PROFESSIONAL



PRO-GRIP

PRO-GRIP

- Stamped From German Molybdenum Vanadium X50CrMoV15 Steel Alloy, Ice-Hardened Available
- Skillfully Honed Cutting Edge, Laser Angle Tested, Enhanced Sharpness, Edge Holding & Ease of Re-Sharpener.
- Ergonomic, Slip Resistant with Santoprene® (PRO-GRIP) or Polypropylene (PRO-LINE) resin.
- Seamless Design on Handle.
- NSF Certified, Meet Health and Safety Standards, Dishwasher Safe and SteriShield® Anti Bacterial Protection.



PEELING KNIFE

Item: 368CP-KB-07-65YD-BK101, BL101, GR101, RD101
Size: 2.5" (65mm)



PARING KNIFE, EUROPEAN

Item: 368CP-KB-06-80EUYD-BL101, RD101
Size: 3" (80mm)



PARING KNIFE

Item: 368CP-KB-06-80YD-BK101, BL101, GR101, RD101
368CP-KB-06-90YD-BK101, BL101, GR101, RD101
Size: 3" (80mm), 3.5" (90mm)



PARING KNIFE, SERRATED

Item: 368CP-KB-06-80SYD-BK101, RD101
368CP-KB-06-90SYD-BK101, RD101
Size: 3" (80mm), 3.5" (90mm)



COOKS KNIFE

Item: 368CP-KB-3801-200-BK201, BL201, RD201, GR201, WH201, BR201, YL201
368CP-KB-3801-250-BK201, BL201, RD201, GR201, WH201, BR201, YL201
368CP-KB-3801-300-BK201, BL201, RD201, GR201, WH201, BR201, YL201
Size: 8" (200mm), 10" (250), 12" (300mm)





BONING KNIFE, STRAIGHT AND NARROW BLADE

Item: 368CP-KB-06-80EUYD-BL101
Size: 3" (80mm)



BONING KNIFE (Straight & Narrow Blade, A Shape)

Item: KB-3808-150A-BK201
Size: 6" (150mm)



STICKING KNIFE

Item: KB-3868-180-BK101
Size: 7" (180mm)



BREAD KNIFE

Item: KB-3855-200-BK201, 250-BK201
Size: 8" (200mm), 10" (250mm)



CARVING KNIFE

Item: KB-3804-200-BK201, 250-BK201
Size: 8" (200mm), 10" (250mm)



MEAT CLEAVER

Item: KB-2288-200-BK101
Size: 8" (200mm)



SALMON KNIFE, GRANTON

Item: KB-3852-300G-BK201
Size: 12" (300mm)



ROAST SLICER, PLAIN

Item: KB-3866-250P-BK101
Size: 10" (250mm)



ROAST SLICER, SERRATED

Item: KB-3866-250S-BK201
Size: 10" (250mm)



BUTCHER KNIFE

Item: KB-3803-250-BK201, 300-BK201
Size: 10" (250mm), 12" (300mm)



STRAIGHT BUTCHER

Item: KB-3843-200-BK201, 250-BK201
Size: 8" (200mm), 10" (250mm)





CHINESE KNIFE

- Stamped From German Molybdenum Vanadium X50CrMoV15 Steel Alloy, Ice-Hardened Available.
- Skillfully Honed Cutting Edge, Laser Angle Tested, Enhanced Sharpness, Edge Holding & Ease of Re-Sharpening.
- Ergonomic, Slip Resistant Santoprene® resin. Seamless Design on Handle.
- Color Coding System Available, Comply with HACCP Regulation.
- NSF Certified, Meet Health and Safety Standards, Dishwasher Safe and SteriShield® Anti-Bacterial Protection.



SLICER, CHINESE NO.2

Item: KB-1394-220-BK201

Size: 8.75" (220x115mm)



CHOPPER, CHINESE NO.2

Item: KB-1395-220-BK201

Size: 8.75" (220x105mm)



KAU KONG, CHINESE NO.2

Item: KB-1383-180-BK201

Size: 7" (180x155mm)



JAPANESE KNIFE

- Stamped From German Molybdenum Vanadium X50CrMoV15 Steel Alloy, Ice-Hardened Available
- Skillfully Honed Cutting Edge, Laser Angle Tested, Enhanced Sharpness, Edge Holding & Ease of Re-Sharpener.
- Ergonomic, Slip Resistant with German Beech Wood. Seamless Design on Handle.



NAKIRI

Item : JP-1133-180
Size : 7" (180mm)



DEBA

Item : JP-1191-180
Size : 7" (180mm)



SASHIMI

Item : JP-1190-240, 1190-300
Size : 10" (240mm), 12" (300mm)



PRO-TOUCH

PRO-TOUCH

- Stamped From German Stainless Steel Alloy.
- Ergonomic, Slip Resistant & Seamless Design on Handle.
- Seamless, Completely Hygienic Handle Construction.



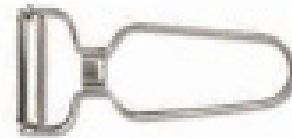
MELON BALLER 22/25mm

Item: GS-10832-22/25-BK201



CHEESE KNIFE

Item: GS-10931-150-BK101



Y - PEELER S/S

Item: PEEL-SS-55P



CHEESE PLANE, SOFT

Item: GS-10930-SO-BK10



CHEESE PLANE, HARD

Item: GS-10930-HD-BK101



GRATERS, ETCHING, COARSE EDGE

Item: GS-10935-CE-BK101



**GRATERS, ETCHING, MEDIUM
EDGE, NARROW**

Item: GS-10935-CEN-BK101



GRATERS, ETCHING, MEDIUM EDGE

Item: GS-10935-ME-BK101



**GRATERS, ETCHING, MEDIUM EDGE,
NARROW**

Item: GS-10935-MEN-BK101



GRATERS, ETCHING, FINE EDGE

Item: GS-10935-FE-BK101



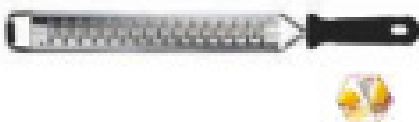
**GRATERS, ETCHING, FINE EDGE,
NARROW**

Item: GS-10935-FEN-BK101



**GRATERS, ETCHING, ONION EDGE,
NARROW**

Item: GS-10935-ON-BK101



**GRATERS, ETCHING, ONION
EDGE, NARROW**

Item: GS-10935-ONN-BK10



GRATERS, ETCHING, POTATO EDGE

Item: GS-10935-PO-BK101



**GRATERS, ETCHING, POTATO EDGE,
NARROW**

Item: GS-10935-PON-BK101

Cutlery-Pro®
We are professional for
THE PROFESSIONAL



DAMASCUS KNIVES

DAMACUS KNIVES

- Hand Crafted by Japanese CP-MAX 67 Layers Damascus Steel.
- Skillfully Honed Cutting Edge, Laser Angle Tested, Enhanced Sharpness, Edge Holding & Ease of Re-Sharpener.
- Ergonomic, Slip Resistant with D-Shaped, Ebony-Finished Carbon Fiber Handles. Seamless Design on Handle.
- Classic Wave and Mirror Design pattern are available for selection.



PARING KNIFE (DM-5806-100)

Size: 4" (100mm)



UTILITY KNIFE (DM-5805-150)

Size: 6" (150mm)



COOKS KNIFE WIDE (DM-5801-200W)

Size: 8" (200mm)



PARING KNIFE (DM-5906-100)

Size: 4" (100mm)



UTILITY KNIFE (DM-5905-150)

Size: 6" (150mm)



COOKS KNIFE WIDE (DM-5901-200W)

Size: 8" (200mm)

DAMASCUS STEEL SET (WAVE)



3 PCS DAMASCUS STEEL SET

Item: KFE-MD-03/001

HAMMERED STYLE DAMASCUS STEEL SET (MIRROR)



3 PCS HAMMERED STYLE DAMASCUS STEEL SET

Item: KFE-MD-03/002

STEAK KNIVES



STEAK KNIFE

Item: KR-6502-110-BK301
Size: 4.25" (110mm)



STEAK KNIFE, SAB

Item: KR-6402-115SAB-BK301
Size: 4.5" (115mm)



STEAK KNIFE, ROUND HEAD

Item: KR-6402-120R-BK301
Size: 4.75" (120mm)

SPECIALIZED KNIVES



MINCING KNIFE, SINGLE BLADE

Item: MK-S1-230-BK101
Size: 9" (230mm)



PIZZA ROCKER

Item: KB-2262-510-BK101
Size: 20" (510mm)

KNIVES ACCESSORIES



SHARPENING STEEL

Item: KB-7577-230-BK101
Size: 12" (300mm)



SHARPENING STEEL, DIAMOND

Item: KB-7477-300DM-BK101
Size: 12" (300mm)



MAGNETIC RACK

Item: BT-TM06-300
Size: 12" (300mm)



MAGNETIC RACK

Item: BT-TM06-450
Size: 18" (450mm)



MAGNETIC RACK

Item: BT-TM06-600
Size: 24" (600mm)



MAGNETIC RACK, S/S

Item: BT-TM09-350
Size: 14" (350mm)



MAGNETIC RACK, S/S

Item: BT-TM09-400
Size: 16" (400mm)



MAGNETIC RACK, S/S

Item: BT-TM09-450
Size: 18" (450mm)

CUTLERY-PRO

CATALOG 2025



PT MULTI FLASHINDO KARISMA

□ JAKARTA

Jl. Hayam Wuruk 114 Blok A No.4,
Maphar. Jakarta - Indonesia 11160
Phone: +62 21 626 8758
Whatsapp: +62 811 9144 617
Email: sales.dept@mfk.co.id

□ SURABAYA

Jl. Saroni Jiwo No.4, Prapen
Surabaya - Indonesia 60299
Phone: +62 31 847 1460
Whatsapp: +62 811 9611 2726
Email: surabaya@mfk.co.id

□ BALI

Jl. Sunset Road No.108b, Kec. Kuta
Kab. Badung. Bali - Indonesia 80361
Phone: +62 361 934 2633
Whatsapp: +62 811 1992 5492
Email: sales.bali@mfk.co.id

□ SERVICE CENTER

Jl. Kamal raya No.9 Unit G, RT 01/RW 06
Tegal Alur. Cengkareng - Indonesia 11820
Phone: -
Whatsapp: +62 811 9144 614
Email: service.center@mfk.co.id