



## TB-SFSSH55

Item No	:	Qty	:
Electrical	:	Volt	:
Options	:		
Price	:		



### Features:

#### STANDARD FRYER FEATURES *f*

- \* Fry pot constructed of stainless steel *f*
- \* Burner Technology, No blower or ceramics *f*
- \* Self Cleaning Burner & Down Draft Protection *f*
- \* 1 1/4" (3.2 cm) Full port drain valve with 1 1/4" (3.2 cm) NPT fixed downspout *f*
- \* Cabinet- stainless steel sides, front, splash back *f*
- \* Digital Two Button Controller *f*
- \* Matchless pilot ignition system with flame loss safety shut off, dedicated fryer gas shut-off valves *f* High temperature limit switch *f*
- \* Drain valve interlock *f* Heavy duty 3 /16" (.48 cm) door hinges *f*
- \* 10" (22.9 cm) Rigid adjustable casters, front locking
- \* Single gas connection – 3 /4" (1.9 cm)

#### ACCESSORY ITEMS SHIPPED WITH UNIT

- 1 - Fry pot drain clean out rod
- 1 - Fry pot cleaning brush
- 1 - Fry pot crumb scoop
- 1 - Filter shovel scoop
- 1 - 12-1/2" x 31" (31.8 x 78.7 cm) flat sheet filter media starter pack
- 1 - 48" x 3/4" (122 x 1.9 cm) NPT flexible gas hose with quick disconnect
- 1 - Tank screen 1x1 mesh
- 1 - Removable basket hanger
- 1 - Filter crumb catch basket
- 1 - Fry pot cover

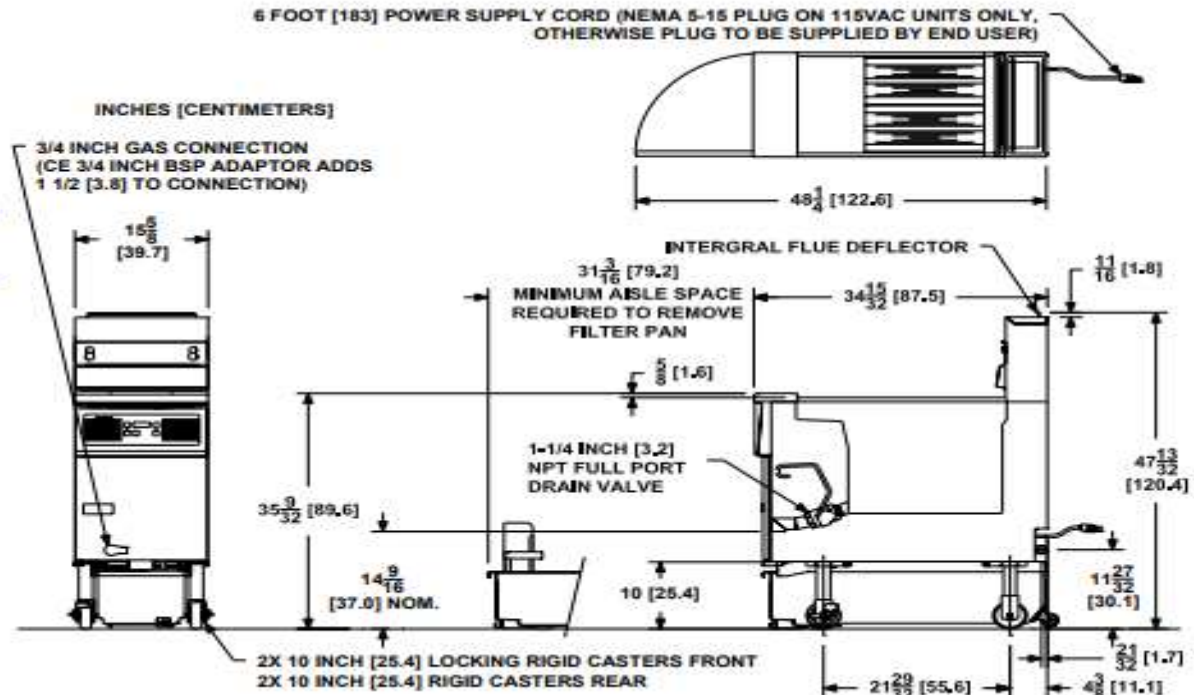
### Model : TB-SFSSH55

#### Specifications :

Oil Capacity	:	40 - 50 Lbs (18-23 kg)
Filter Pan Oil Capacity	:	66 Lbs (29.9 kg)
Voltage	:	208 / 220-240V 50-60 h 4.1 Amps
Ship H x W x L	:	59 x 23 x 44 in (149.9 x 58.4 x 111.8 cm)
Cube	:	34.6 ft3 . (1.0m3 )
Weight	:	320 Lbs ( 145.1 kg)
Gas Consumption	:	80,000 BTUs (23 kW) (84 MJ)



TB-SFSSH55



**INDIVIDUAL FRYER SPECIFICATIONS**

Frying Area	Cook Depth	Oil Capacity	Gas Input Rate / Hr	Burner Pressure Nat	Burner Pressure LP
14 x 14 in (35.6 x 35.6 cm)	3-1/4 - 5 in (8.3 - 12.7cm)	40 - 50 Lbs (18-23 kg)	80,000 BTUs (23 kW) (84 MJ)	4" W.C. (10 mbars / 1 kPa)	10" W.C. (25 mbars / 2.4 kPa)

**FILTER SPECIFICATIONS**

Filter Pan Oil Capacity	Filter Pump Motor	Filter Pump Rated Flow	Filter Media
66 Lbs (29.9 kg)	1/3 HP 50/60 Hz	4.5 GPM (17.0 LPM) @ 60 Hz 3.75 GPM (14.2 LPM) @ 50 Hz	12-1/2 x 31 in (31.8 x 78.7 cm) Flat Sheet

**FRYER SYSTEM SHIPPING INFORMATION (Approximate)**

Shipping Weight	Shipping Crate Size H x W x L	Shipping Cube
320 Lbs ( 145.1 kg)	59 x 23 x 44 in (149.9 x 58.4 x 111.8 cm)	34.6 ft <sup>3</sup> . (1.0m <sup>3</sup> )

**INSTALLATION INFORMATION**

GAS SYSTEM REQUIREMENTS			ELECTRIC SYSTEM REQUIREMENTS		
	Natural Gas	LP Gas		115V 60Hz	208 / 220-240V 50-60 hz
Supply Pressure *	7 - 10" W.C. (17.4 mbars/ 1.74 kPa)	11 - 13" W.C. (27.4 mbars/ 2.74 kPa)	Fryer / Filter Cord Total Amps	6.1	4.1
Total Gas Load / Hr	80,000 BTUs (23 kW) (84 MJ)				

\* Check plumbing / gas codes for proper gas supply line sizing to sustain burner pressure when all gas appliances are full on.

**CLEARANCES**

Front min.	Floor min.	Combustible material		Non-Combustible material		Fryer Flue Area
		Sides min.	Rear min.	Sides min.	Rear min.	
31 3/16" (79.2 cm)	6" (15.25 cm)	6" (15.2cm)	6" (15.2cm)	0"	0"	Do not block / restrict flue gases from flowing into hood or install vent hood drains over the flue.

\* Continuing research results in steady improvements; therefore, these specifications are subject to change without prior notice.



PT MULTI FLASHINDO KARISMA

**Jakarta**  
Jl. Hayam wuruk 114 Blok A No. 4  
Jakarta - Indonesia 11160  
Telp. (021) 626 8758,  
Fax. (021) 625 8473

**Surabaya :**  
Jl. Sarono Jiwo No.4  
Surabaya - Indonesia 60299  
Telp. (031) 847 1460,  
Fax. (031) 847 1474

**Service Center :**  
Jl. Kamal Raya No.9 RT01/06, Tegal Alur - Cengkareng  
Telp. (021) 5595 2523/ 2952 8135  
Fax. (021) 5595 7271  
Email: service.center@mfk.co.id