



**TB-SFSSH55**

Item No	:	Qty	:
Electrical	:	Volt	:
Options	:		
Price	:		



**Features:**

Rethermalizer Gas Cooker, TB-SRTG14-2 (Dual Cooker)

- \* (L10209-Ax, Gas type, Voltage, kBtu/hr)
- \* Line up (L/R) SRTG14, SRTG14 includes Digital Solid State Thermostat, matchless ignition, automatic water
- \* Fill/level control, SS cabinet front and aluminized sides, insulated tank with double walled cover, water shedding top deck, tank overflow, common drain, 6" swivel casters. Accessories includes: (1) brush, (2) 12 slot tank racks, (1) 48" x 1/2" (122 x 1.27cm) flexible water hose w/QD, (1) 48"x3/4" (122 x 1.9cm) gas hose w/QD.

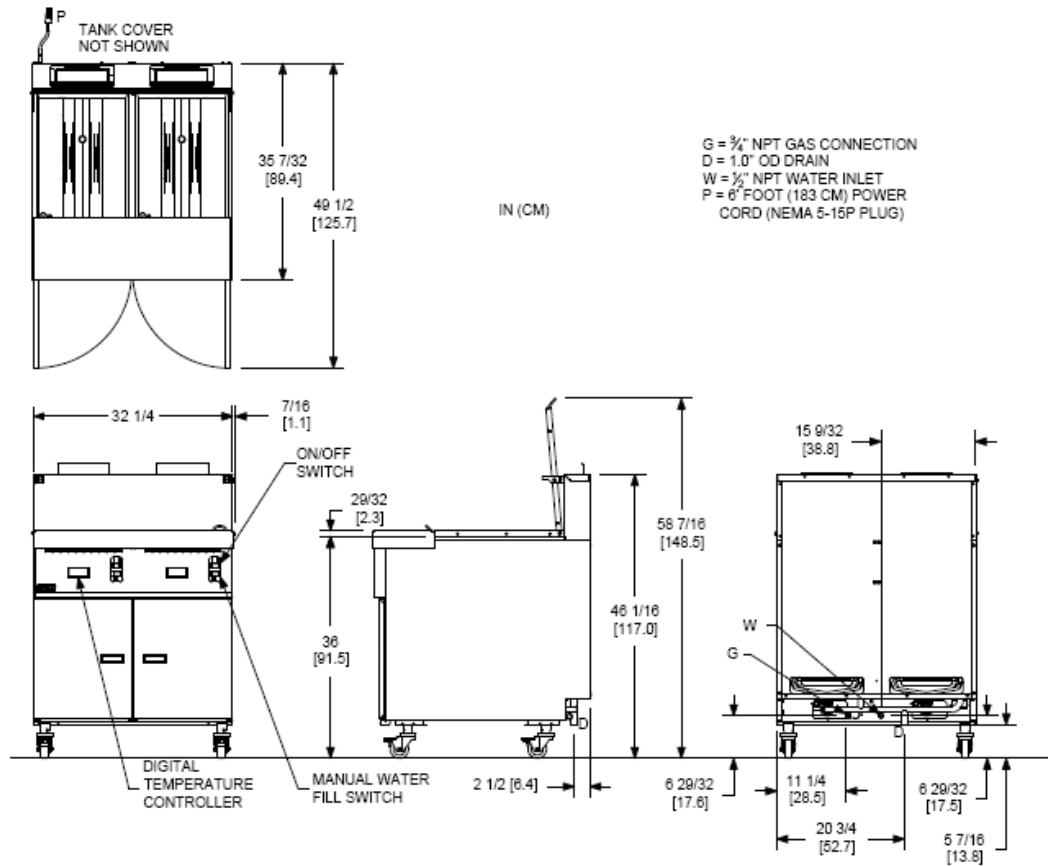
**Model : B-SRTG14-2**

**Specifications :**

Water Capacity	:	18 1/4 gal ( 69.1 liters)
Cooking Area	:	14 1/8 x 19 1/2 in (35.8 x 49.5 cm)
Cook Depth	:	12-3/8 in (31.4 cm)
Burner Pressure Nat	:	4.0" W.C. (9.96 bars/.996kPa)
Burner Pressure LP	:	10" W.C.(25 bars/2.5kPa)
Ship H x W x L	:	56 x 35 1/2 x 46 1/2in (142.2 x 90.1 x 118.1cm)
Cube	:	53.5 ft3 (1.5 m3 )
Shipping Weight	:	520 Lbs (235 kg)
Gas Input Rate / Hr	:	55,000 BTUS(16 kW) (58MJ)



# TB-SFSSH55



INDIVIDUAL RETHERMALIZER SPECIFICATIONS						
Models	Cooking Area	Cook Depth	Water Capacity	Gas Input Rate / Hr	Burner Pressure	
					Nat	LP
TB-SRTG14 (per Tank)	14 1/8 x 19 1/2 in (35.8 x 49.5 cm)	12-3/8 in (31.4 cm)	18 1/4 gal (69.1 liters)	55,000 BTUS (16 kW) (58MJ)	4.0" W.C. (9.96 bars/996kPa)	10" W.C. (25 bars/2.5kPa)
RETHERMALIZER SHIPPING INFORMATION (Approximate)						
Shipping Weight			Shipping Crate Size H x W x L		Shipping Cube	
520 Lbs (235 kg)			56 x 35 1/2 x 46 1/2 in (142.2 x 90.1 x 118.1cm)		53.5 ft <sup>3</sup> (1.5 m <sup>3</sup> )	
INSTALLATION INFORMATION						
GAS SYSTEM REQUIREMENTS			ELECTRIC SYSTEM REQUIREMENTS			
	Natural Gas	LP Gas	Power Cord	115V 60Hz	208 / 220-240v 50-60 hz	
Supply Pressure *	7" W. C. (17.4 mbars/1.75 kPa)	13" W. C. (32.4 mbars/3.25 kPa)	AMPS	TB-SRTG-2	2.0	1.0
Total Gas Load / Hr	TB-SRTG-2	110,000 BTUs (33kW) (119 MJ)				
* Check plumbing / gas codes for proper gas supply line sizing to sustain burner pressure when all gas appliances are full on.						
CLEARANCES						
Front min.	Floor min.	Combustible material		Non-Combustible material		Fryer Flue Area
30" (76.2 cm)	6" (15.25 cm)	Sides min.	Rear min.	Sides min.	Rear min.	Do not block / restrict flue gasses from flowing into hood or install vent hood drains over the flue.
		6" (15.2cm)	6" (15.2cm)	0"	0"	

\* Continuing research results in steady improvements; therefore, these specifications are subject to change without prior notice.



## PT MULTI FLASHINDO KARISMA

### Jakarta

Jl. Hayam wuruk 114 Blok A No. 4  
 Jakarta - Indonesia 11160  
 Telp. (021) 626 8758,  
 Fax. (021) 625 8473

### Surabaya :

Jl. Sarono Jiwo No.4  
 Surabaya - Indonesia 60299  
 Telp. (031) 847 1460,  
 Fax. (031) 847 1474

### Service Center :

Jl. Kamal Raya No.9 RT01/06, Tegal Alur - Cengkareng  
 Telp. (021) 5595 2523/ 2952 8135  
 Fax. (021) 5595 7271  
 Email: service.center@mfk.co.id



TB-SFSSH55