

Item No	:	Qty	:
Electrical	:	Volt	:
Options	:		
Price	:		

## UVGI Return Air Grill



### Application

- The UVGI Return Air Grill is a 24" by 24" ceiling Return grill to replace Standard Return Grills.

### Specification

- Provide a Halton UVGI-RA Return Air Grill Ultraviolet Light Germicidal Irradiation unit. The unit exterior shall be constructed of aluminized steel with a powder coat baked enamel finished intake plate. The intake plate shall be hinged for service.
- The unit shall be equipped with 2 UVGI tubes rated At 13,000 hours and 254nm. UV-C bulbs outside of the 254nm range or producing ozone are expressly Prohibited. Each UVGI bulbs shall have an output of 75 microwatts per square centimeter.
- The unit shall come equipped with safety interlocks to limit accidental exposure to UV-C lights. The maximum airflow for the UVGI-RA Return Grill is 650 CFM. Higher volumes yield a reduced inactivation rate of airborne pathogens.
- Interconnecting cables to daisy chain with other UVGI-RA return air grills provided. The system requires a master control panel connected via data cabling to each UVGI-RA unit. The unit will not interfere with the HVAC system unit operation. The unit shall be built with UL listed components.

### Model : UVGI-RG

### Specifications :

Voltage	:	220-240 / 1
Power	:	375 watt
Dimension	:	755 (W) x 602 (D) x 148 (H) cm
Net Weight	:	18 Kg

\* Continuing research results in steady improvements; therefore, these specifications are subject to change without prior notice.



### PT MULTI FLASHINDO KARISMA

#### Jakarta

Jl. Hayam wuruk 114 Blok A No. 4  
Jakarta - Indonesia 11160  
Telp. (021) 626 8758,  
Fax. (021) 625 8473

#### Surabaya :

Jl. Sarono Jiwo No.4  
Surabaya - Indonesia 60299  
Telp. (031) 847 1460,  
Fax. (031) 847 1474

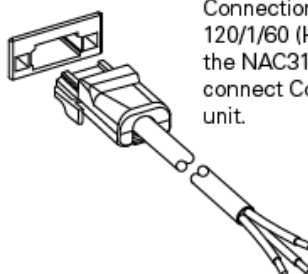
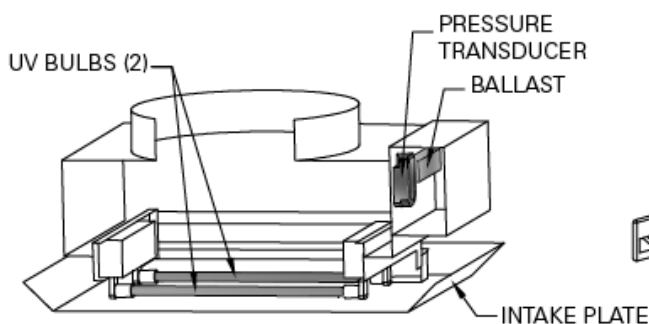
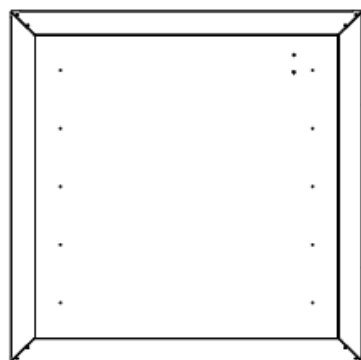
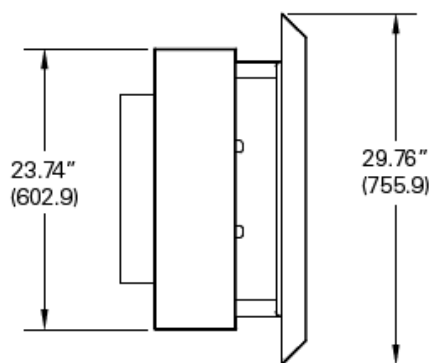
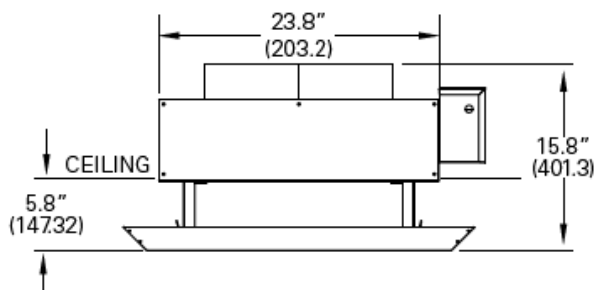
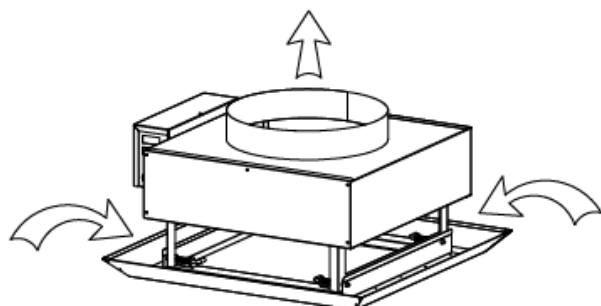
#### Service Center :

Jl. Kamal Raya No.9 RT01/06, Tegal Alur - Cengkareng  
Telp. (021) 5595 2523/ 2952 8135  
Fax. (021) 5595 7271  
Email: service.center@mfk.co.id

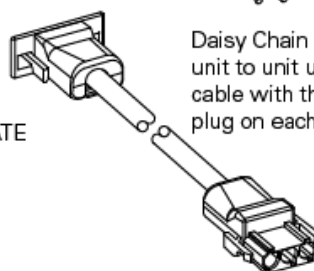
# Halton

## Dimensional Data

**Weight:** 40 lbs (18 kg)



Connection from Control Panel:  
120/1/60 (Hot-N-G). Halton supplies  
the NAC31S.W plug for installer to  
connect Control Panel to the primary  
unit.



Daisy Chain Connection from  
unit to unit using a 3 wire  
cable with the NAC31S.W  
plug on each end.



### PT MULTI FLASHINDO KARISMA

#### Jakarta

Jl. Hayam wuruk 114 Blok A No. 4  
Jakarta - Indonesia 11160  
Telp. (021) 626 8758,  
Fax. (021) 625 8473

#### Surabaya :

Jl. Saroni Jiwo No.4  
Surabaya - Indonesia 60299  
Telp. (031) 847 1460,  
Fax. (031) 847 1474

#### Service Center :

Jl. Kamal Raya No.9 RT01/06, Tegal Alur - Cengkareng  
Telp. (021) 5595 2523/ 2952 8135  
Fax. (021) 5595 7271  
Email: service.center@mfk.co.id